

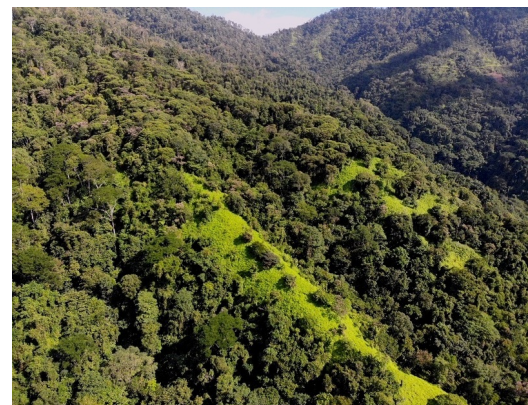
Savegre Mountain and Waterfall Farm with Ocean views

\$450,000

Reference: 11124

📍 Savegre, Puntarenas

Property Type: Land • Lot Size: 1890000 sq m •



- Status: Sold
- Equestrian
- Mountain Properties
- Valley Views
- Acreage
- Investment Opportunities
- Mountain View
- Waterfall View
- Development Farm
- Jungle Views
- Ocean View
- Water Views

Property Description

Over 466 acres of pristine mountainside with a mix of pastureland, secondary and primary forested lands with rivers as boundaries on two sides. This amazing parcel of land is located along the south Pacific sector of Costa Rica just south of Manuel Antonio/Quepos and just north of beach town of Dominical. Property boasts epic views looking down the valley of the Portalon River out to the Pacific, with frontage along two sides with amazing waterfalls and pools. If you are seeking isolation and want to be in harmony with nature, look no further, this property is the one! Perfect for an eco-retreat, wellness center or organic farming etc... Nearby activities include hiking, waterfalls, snorkeling, diving, sportfishing, ziplining, and so much more....

"Information is deemed to be correct, but not guaranteed"

Additional Information

- Reference: 11124
- Sold
- For Sale
- Land
- \$450,000
- View : Ocean